

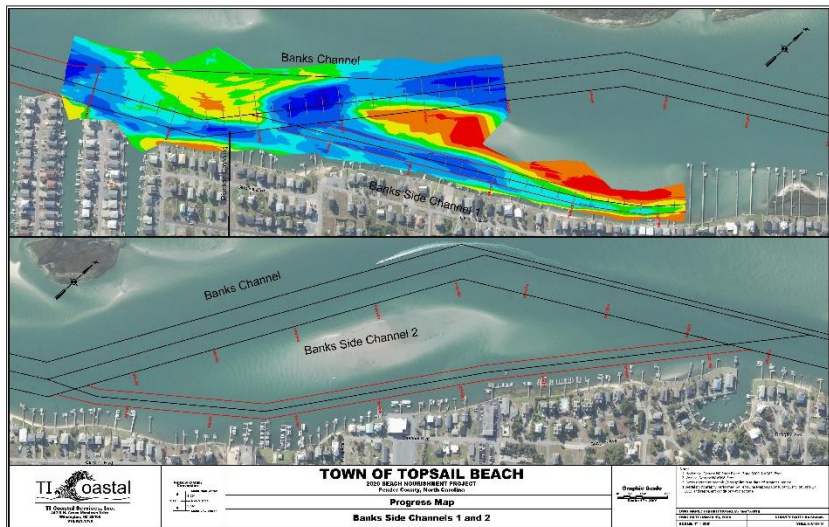


BEACH NOURISHMENT NEWS AND NOTES

March 25, 2020

Dredge Progress

While we continue to deal with the impacts of COVID-19 on our daily lives, efforts to move our Channel Dredging and Beach Nourishment Project forward continue. Weeks Marine has been dealing with difficulties related to weather and rough waters at times but both the dredges, the *J.S. Chatry* and the *Borinquen*, are operating in our waterways. Each dredge will experience some down time periodically for maintenance or movement of pipeline in the channels to be dredged, but this has been anticipated. A particularly difficult area of the inlet for dredging did cause some delay, but that has been resolved and the *J.S. Chatry* is moving forward. The Town's website includes progress maps that are updated regularly to show the location of both sand placement on the beach and parts of the channel and inlet that have been dredged to date. New surveys of the area recently dredged by the *Borinquen* shows much improved deep water access.



J.S. Chatry

The *J.S. Chatry* continues to progress beyond the outer bar and into the New Topsail Inlet. Sand pumped from the dredge has been placed just south of the Queens Grant development and is moving north to the Town Limits. Once this is completed, the pipes will shift and move southward towards the Jolly Roger Pier. As the picture



Aero
Photo
727.520.8181
www.aerophoto.com
Topsail Beach Nourishment
and Channel Dredaina Project
Image # 77
Date 03.18.2020

shows, the nourished stretch of beach includes a new dune, 25-foot wide at the top, and an extended beach area beyond its toe. This creates a much wider beach providing more protection for the Town from the impacts of future storms, as well as greater recreational beach area. Significant progress has been made since these photos have been taken.

Borinquen

The *Borinquen* is working in Banks Channel and will include dredging efforts in Topsail Creek. The sand placement begins at Drum Avenue and is working north to the Jolly Roger Pier where it will meet the work completed by the *J.S. Chatry*.

BE SAFE

Even though our beaches are still open, areas where the sand placement is taking place is still a work zone. **For your safety and the safety of the workers, please avoid the designated work areas. DO NOT CROSS THE FENCES AND BARRICADES INTO THE WORK AREAS.**



Aero
Photo
727.520.8181
www.aerophoto.com
Topsail Beach Nourishment
and Channel Dredaina Project
Image # 74
Date 03.18.2020

Be sure to visit our website at www.topsailbeach.org and look for the icon below for more information.



Also watch for us on Facebook!